

ABS SERVICES, INC.



- RETAINING WALL CONSTRUCTION
- ON SITE PRECASTING
- SHORELINE PROTECTION & RECONSTRUCTION
- HEAVY CIVIL

DESIGN/BUILD ABS SERVICES, INC. NATIONWIDE

ABSSERVICESINC.COM | 866-640-1992



Working with Communities for **growth** and development.

Since 1991 ABS Services, Inc. has been providing specialty design/build retaining wall solutions for clients throughout the United States.

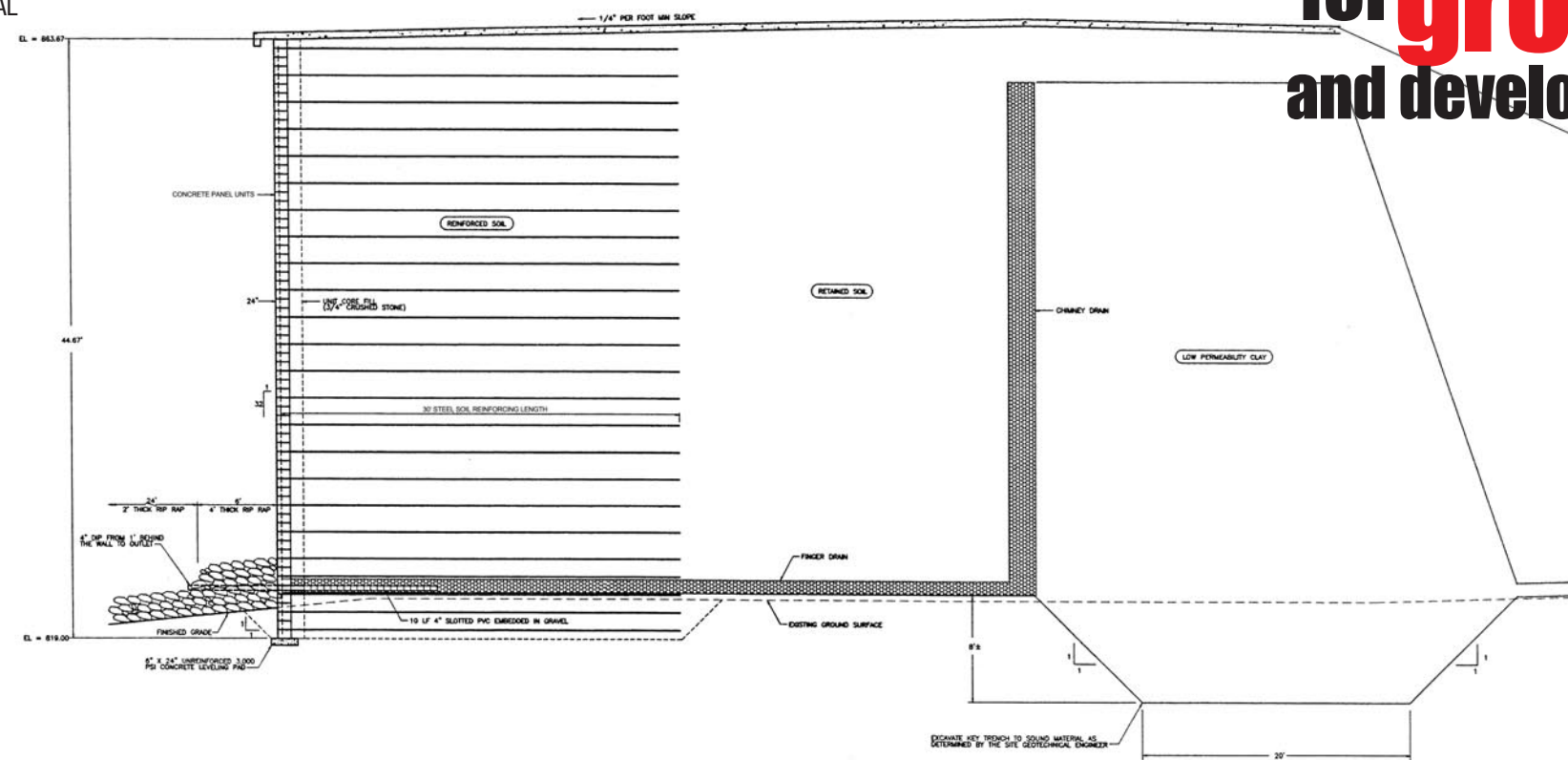
ABS provides the technical expertise and depth of experience required to meet the challenges of every size and type of public or private sector project.

Always attentive to your budget, timeline and safety issues, ABS is dedicated to putting the very best people, products and specialized equipment to work on your project.

Whatever your project demands, we look forward to solving your technical and aesthetic requirements - regardless of location or geotechnical conditions.

To learn more, please call:
866-640-1992
or email:
tony@absservicesinc.com
website:
www.absservicesinc.com

8,100 s.f. segmental block MSE dam, 44' tall
Mount Laurel, AL



ABS
SERVICES

Mississippi Department of Transportation - Yazoo City, MS
13,200 s.f. segmental block MSE retaining wall bridge lead up ramps





Continental Cement Mine & Manufacturing Facility
Hannibal, Missouri
8,000 s.f. galvanized welded wire MSE retaining wall dump structure and lead up ramp , 44' tall

MINING APPLICATIONS of every SIZE and scale

Every project has a timeline - some more demanding than others. Contractual deadlines, seasonal demands, road closures, natural disasters - for nearly 30 years ABS has demonstrated its ability to meet the most demanding construction timeline constraints, and safely complete projects nationwide.

Shown above, Continental Cement Company had a 10-day work window to construct a new access ramp for its primary crusher.

The challenge:
Who could safely construct a 44-foot-tall retaining wall and place 14,000 tons of backfill in 10 days... with only 2 weeks notice? ABS accepted the challenge and completed the project - utilizing only one of its crews - in only 6 days.

Similarly, Hanson Aggregates entrusted ABS to construct its lead-up ramp and MSE dump structure for their primary crusher in Chico, Texas.

ABS provides the same level of focused effort to the specific challenges of every project it constructs, regardless of size or location.

From choosing the correct retaining wall system, engineering, logistics planning, workforce and equipment deployment, ABS delivers the same level of expertise to each of its clients.



Hanson Aggregates Mine
Chico, Texas
13,000 s.f. galvanized welded wire MSE retaining wall
dump structure and lead up ramp , 50' tall



CAT 777 haul truck
Loaded capacity: 400,000 lbs.



Dump structure lead up ramp

MINING APPLICATIONS of every SIZE and scale

ABS SERVICES



Aggregates Mine - Hondo, Texas
10,000 s.f. precast concrete panel MSE retaining wall dump structure
and 900' lead up ramp, 50' tall

The precast concrete panel MSE retaining wall and the lead up ramp
were constructed simultaneously over a 6-week period.



Aggregates Mine
Millsap, Texas
8,000 s.f. segmental block MSE retaining wall dump structure
and lead up ramp, 43' Tall



MINING APPLICATIONS
of every
SIZE and **scale**

Uninterrupted operation of your mine is critical to achieving your company's annual production goals. As a result, many of the largest mine operators in the United States have trusted ABS with their new or re-engineered primary crusher dump wall structures.

For nearly 30 years ABS Services, Inc. has been working with aggregate and energy producers to design, engineer, and construct their primary crusher dump walls and lead up ramps.



Prefabricated steel bump curb and reinforced concrete approach slab



Steel H-piles installed with 100 ton high-frequency vibro hammer

ABS
SERVICES



MINING APPLICATIONS of every SIZE and scale

Safety: Job #1

ABS has continually met MSHA and OSHA safety requirements over its 30 year history. ABS is committed to its employees, other work forces, and the public's safety through the use of a proven fall-protection and prevention plan. ABS also employs a thorough safety policy; weekly safety and training meetings, utilization of appropriate personal protective equipment, highly maintained construction equipment and vehicles, and safety monitors.



Dolese Bros. Aggregates Mine and Manufacturing facility - Roosevelt, OK
5,000 s.f. segmental block MSE retaining wall dump structure, 38' tall
Simultaneous installation; dump structure and primary crusher

ABS SERVICES



Drilled
SOLUTIONS for
CONFINED SPACES
and **COMPLEX**
GEOLOGIC CONDITIONS



Before



After

Private Residence
Soldier Pile Slope Stabilization
70' Steel H-Piles grouted in 30" dia. drilled shafts

ABS
SERVICES



Mississippi Department of Transportation - Biloxi, MS and Pass Christian, MS
17,000 s.f. and 3,000 s.f. 2-stage MSE retaining wall bridge lead up ramps with full-height precast concrete panels. (Two of the many bridge structures rebuilt after Hurricane Katrina.)

You choose the finish of your retaining wall.

From determining the correct retaining wall system and engineering, logistics planning, workforce and equipment deployment, ABS executes projects of every scale nationwide.

ABS can manufacture precast panels to your specifications, with the face finish of your choosing. ABS can also precast at your project site, or at one of our closest precast facilities.

Through the use of articulated or full-height precast panels with textures ranging from brick, stone, block, wood to smooth finishes - and any color - you choose the finish of your retaining wall.



ABS
SERVICES



2-stage welded wire MSE retaining wall with full-height precast concrete panels.

Temporary surcharge
in place during
settlement phase of
2-stage MSE
retaining wall.

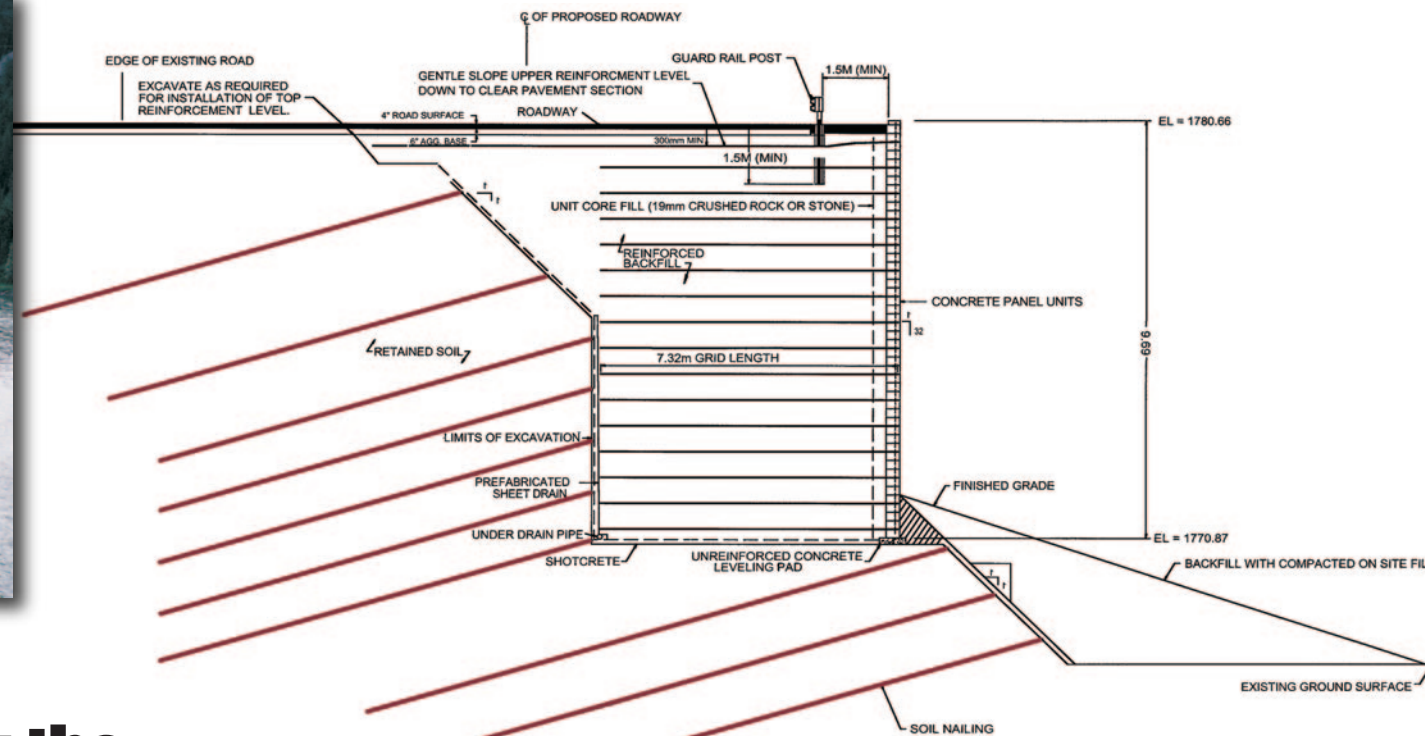


Unique
EXPERTISE
for public and private
challenges





Completed soil nail wall with temporary rock-fall mesh facing, prior to installation of a segmental block MSE retaining wall.



Spanning the Western Heights with **STRENGTH** & beauty

Whether working in a materials mine, a mountain pass in the Rockies, or a sea wall on the Gulf, ABS applies the same dedication to safe construction practices at every job site. A great safety record does not happen by chance; it is the result of decades of safe construction practices and training, as well as an understanding of the unique safety demands posed by retaining wall construction. Not only has ABS continually met MSHA and OSHA safety requirements over its 30 year history, but also strives to exceed them.

ABS is committed to its employees, other onsite crews, and the safety of the public through the use of: 1) a proven fall-protection and prevention plan, 2) thorough safety policies, 3) weekly safety meetings and training, 4) appropriate personal protective equipment, 5) highly maintained construction equipment and vehicles, and 6) safety monitors. ABS applies all of these safety practices on a constant basis – with the goal of making every job site a safe work place for everyone.



Wyoming Department of Transportation
Highway 26 South of Jackson, WY -
30,000 s.f. soil nail wall and 55,000 s.f. MSE/SRW

ABS
SERVICES

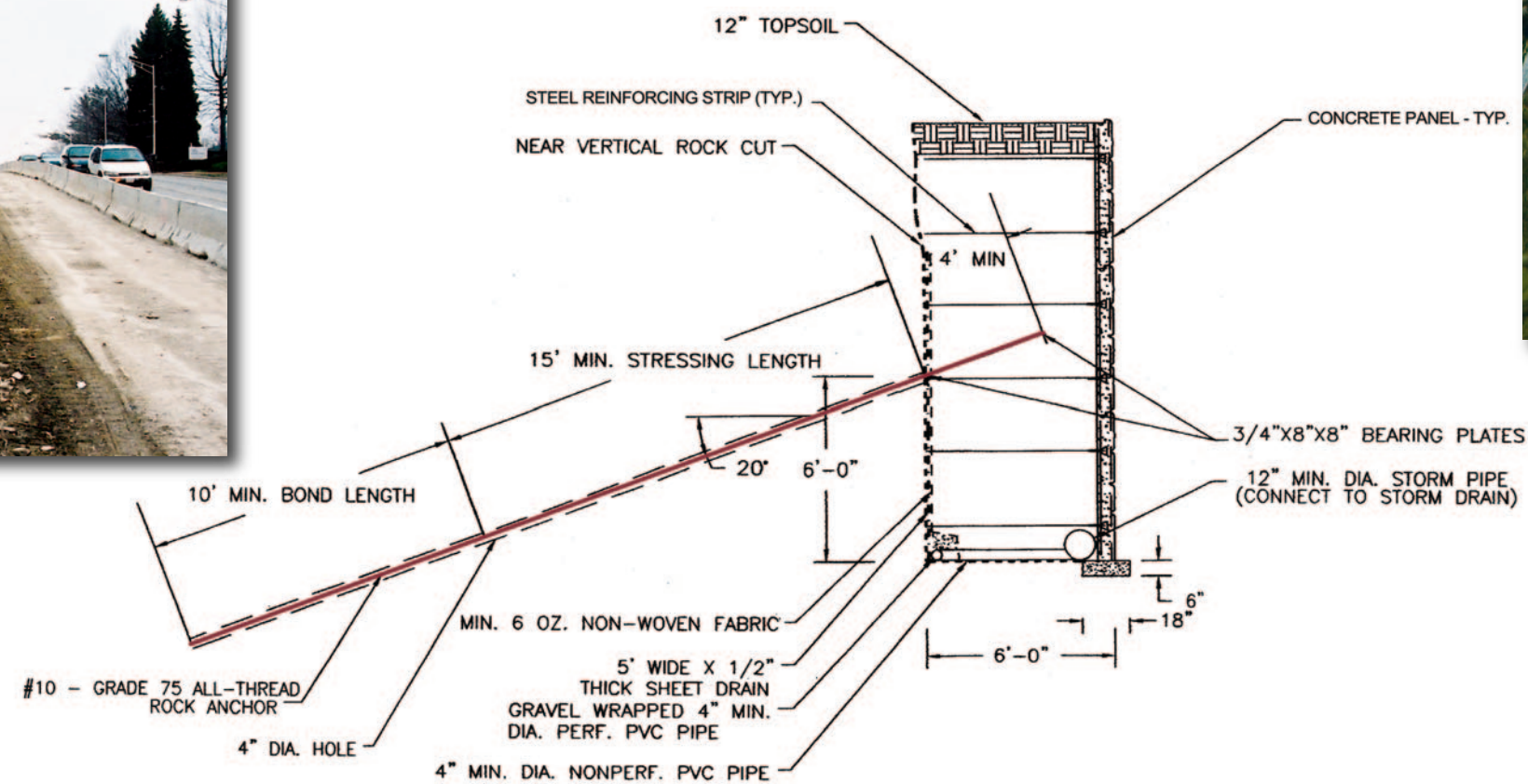


Before



After

Sam's Club - Cuyahoga Falls, Ohio
8,000 s.f. rock anchor assisted precast concrete panel MSE retaining wall



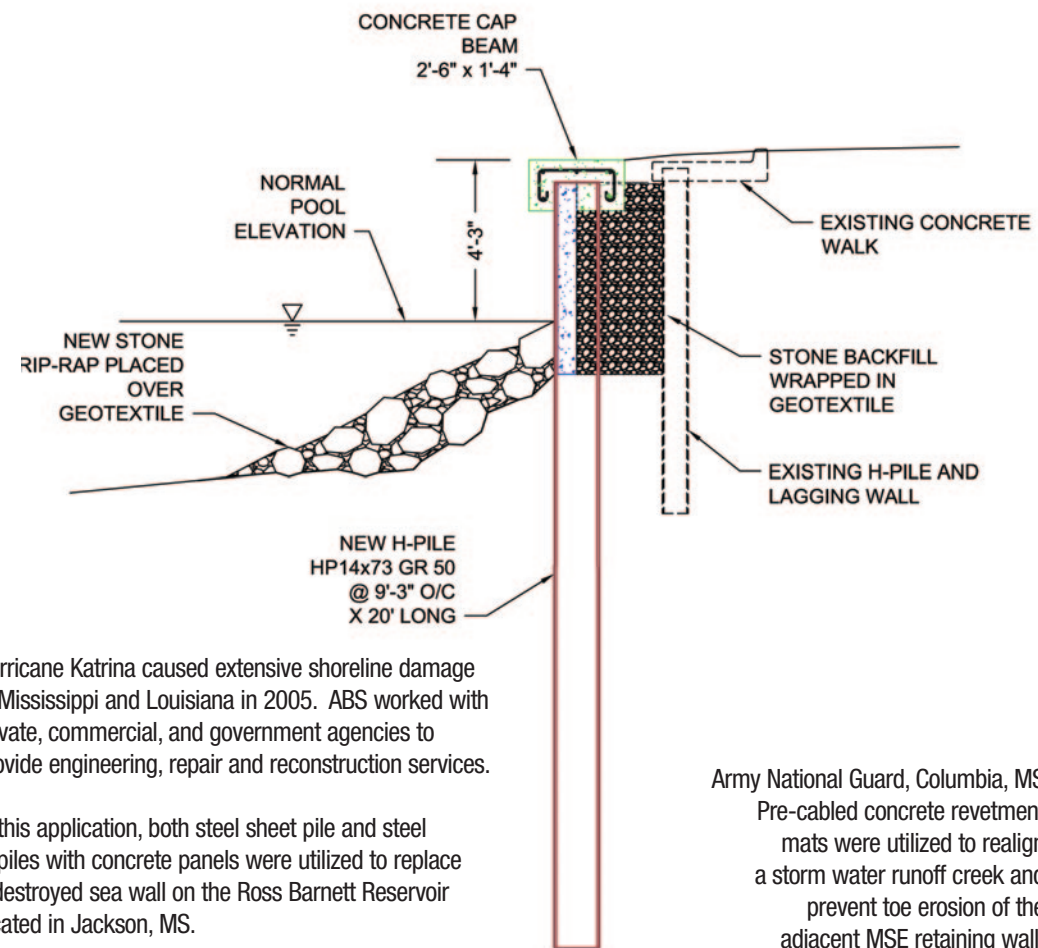
ABS
SERVICES

Drilled
SOLUTIONS for
CONFINED SPACES
and **COMPLEX**
GEOLOGIC CONDITIONS



In this application, the city of Cuyahoga Falls, Ohio selected an Ashlar Stone Face Finish for the precast concrete panels that would complement the existing architecture of the neighborhood.

Erosion Control for GOVERNMENT, commercial & residential water applications



Hurricane Katrina caused extensive shoreline damage in Mississippi and Louisiana in 2005. ABS worked with private, commercial, and government agencies to provide engineering, repair and reconstruction services.

In this application, both steel sheet pile and steel H-piles with concrete panels were utilized to replace a destroyed sea wall on the Ross Barnett Reservoir located in Jackson, MS.

Army National Guard, Columbia, MS
Pre-cabled concrete revetment mats were utilized to realign a storm water runoff creek and prevent toe erosion of the adjacent MSE retaining wall.



ABS utilizes hydraulic hammers sized to meet every piling application. Either excavator-mounted for sands, shallow applications, and confined overhead spaces; or crane-suspended for use in clays and deep piling applications.

ABS
SERVICES



ABS employs modular barges, tug boats, and other specialized construction equipment that is sized to allow quick relocation to your project.

ABS SERVICES, INC.

Specializing in Design/Build Solutions of:

- Precast Concrete Panel Walls
- Segmental Block Walls
- Over Steepened Reinforced Slopes
- Welded Wire-Faced Retaining Walls, Permanent & Temporary
- Gabion Basket Walls
- Mass Gravity Concrete Block Walls
- Sheet Pile Walls
- Pile & Lagging Walls, Timber & Concrete Panels
- Soil Nails
- Soil Anchors
- Rock Anchors
- Shoreline Protection and Reconstruction
- Heavy Civil

Manufacturing of:

- Full-Height and Articulated Precast Concrete Panels
- Precast Sound and Privacy Walls
- Precast Bridges

Notable Clients:

United States Department of Transportation
United States Army Corps of Engineers
United States Air Force
United States Army
United States Forest Service
Alabama Department of Transportation
Colorado Department of Transportation
Louisiana Department of Transportation
Mississippi Department of Transportation
Tennessee Department of Transportation
Utah Department of Transportation
Wyoming Department of Transportation
Oklahoma State University
Mississippi State University
Federal Express
Wal-Mart

Numerous National and International
Companies and Developers

Snake River Canyon
- WYDOT
Jackson, Wyoming



DESIGN/BUILD ABS SERVICES, INC. NATIONWIDE

ABSSERVICESINC.COM | 866-640-1992

